

PART OF THE NORTH 1/2 SECTION 19, T.5N., R.2W., S.L.B. 8 M.
PINKHAM ESTATES SUBDIVISION
PHASE 1

313

IN WEBER COUNTY

TAXING UNIT: 110

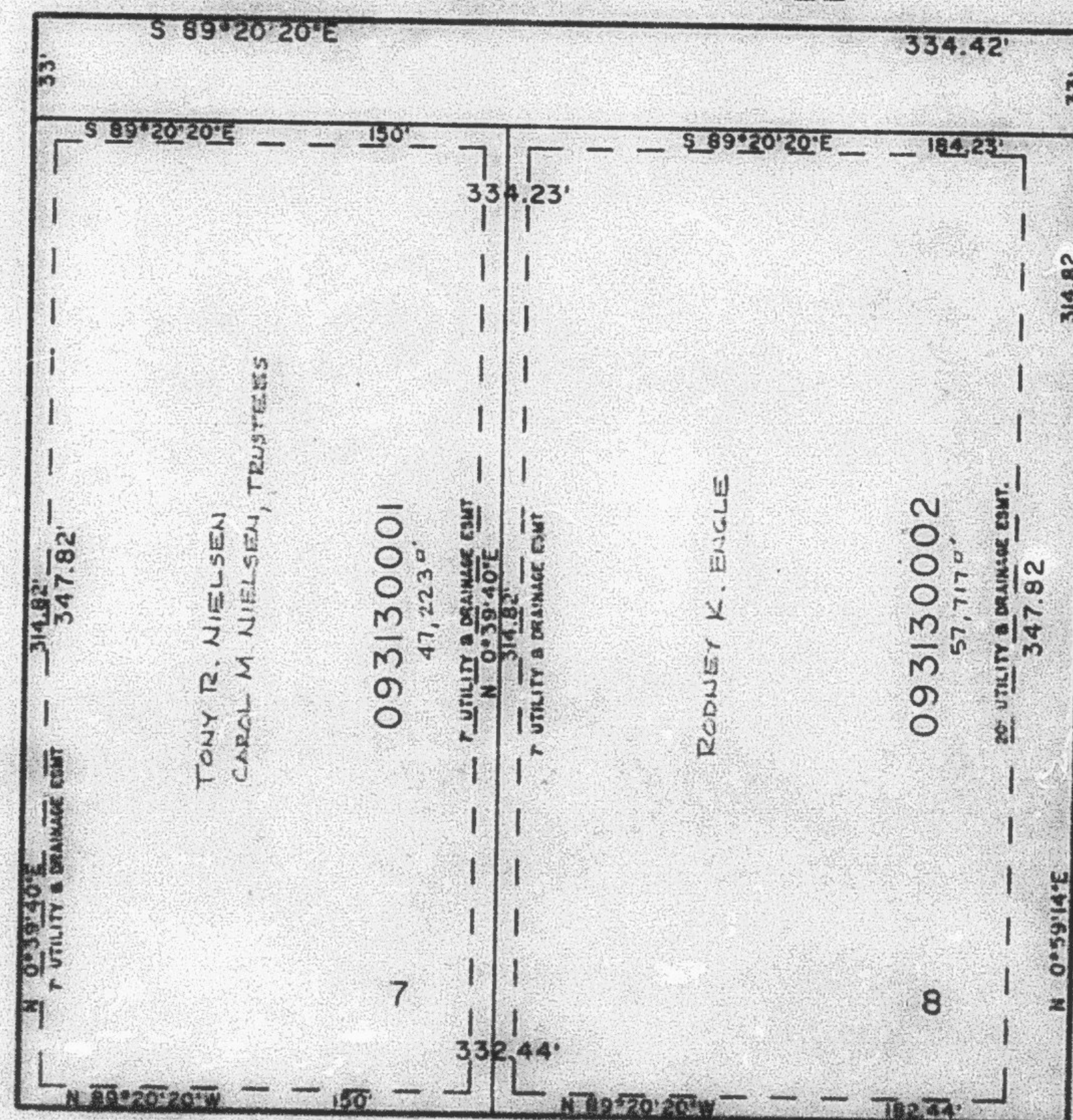
SCALE 1"=50'

NE CORNER
SECTION 19
W.S. MON.

SEE PAGE 81

5900 SOUTH STREET

SEE PAGE 81



SEE PAGE 81

SEE PAGE 81

FOR COMPLETE ENG. DATA SEE
ORIGINAL DEDICATION PLAT IN
BOOK 29, PAGE 10 OF RECORDS